

Tandus

# Identity: Inception & Intrinsic

MODULAR CARPET

Purpose.  
Intention.  
Simplicity.

 **Tarkett**



**Practicing  
mindfulness and  
simplification.**

Identity series was created from our pursuit of a floorcovering that is, at its very essence, stripped down to beauty, performance and purpose. This carefully curated selection is meant to dissolve the work-life divide with a unique combination of texture, color, pattern and modularity. Two patterns are offered in their own coordinating palette, making the collection both comprehensive and streamlined. These soft surfaces have been paired with two new Contour LVT designs, helping to create a tailored, cohesive experience that meets the needs of each unique space.











Intrinsic MUNDANE 631100005 Tile 50 x 50 cm Vertical Ashlar Installation









Inception MUNDANE 631094005 Tile 50 x 50 cm Vertical Ashlar Installation







You are unique and so is your project!



Inception SCROLLS 631094008 Tile 50 x 50 cm Vertical Ashlar Installation



## Customization example

Select your carpet & change easily the accent colour for only 60sqm!



Minimum order = **60 sqm only** if for standard pattern and standard colour yarn

Sample available **within 2 weeks**

Production done in **2-4 weeks**

## Change of colour!

Our carpet designs made from our library of yarn colours can be customized with the yarn colours of your choice. Select among our + 70 standard yarns available and create your unique carpet with minimum order of only 60 sqm! For non-standard yarns, the minimum order is 1,000 sqm.

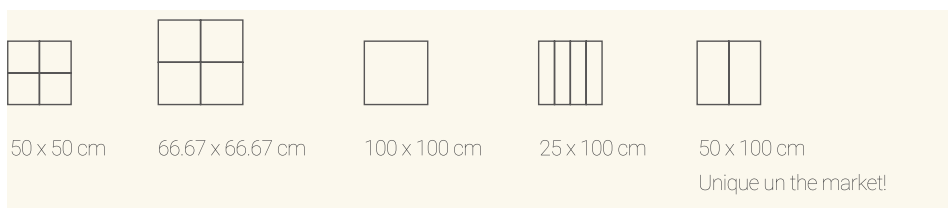
## Create custom pattern!

Add signature images to your flooring design, such as company logos, school mascots, government seals and more.

These customized emblems let you use every plane of the interior space to create a unique experience and communicate a client's valuable brand message.

## Change of format!

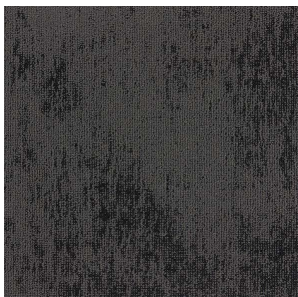
We can easily produce in 5 formats all products with minimum order of only 60 sqm per product with no surcharge!



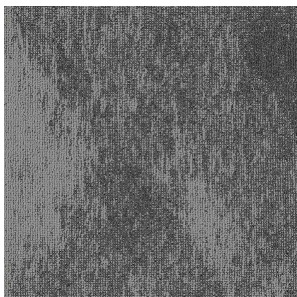


# Inception

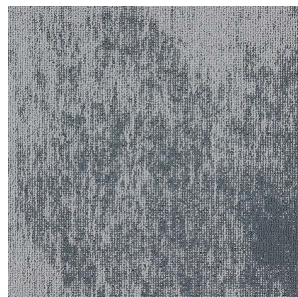
Tile 50 x 50 cm: 631094  
Plank 50 x 100 cm: 631096



BLOCK 001



ESSENCE 002



SKYLIGHTS 003



SPHERE 004



MUNDANE 005



BRUSHLINE 006



NATURALISTIC 007

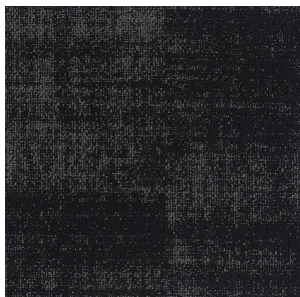


SCROLLS 008



# Intrinsic

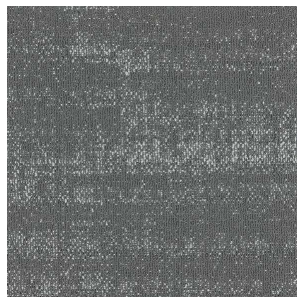
Tile 50 x 50 cm: 631100  
Plank 50 x 100 cm: 631102



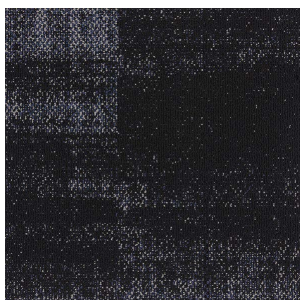
BLOCK 001



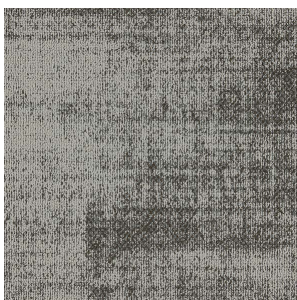
ESSENCE 002



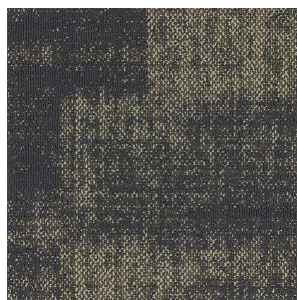
SKYLIGHTS 003



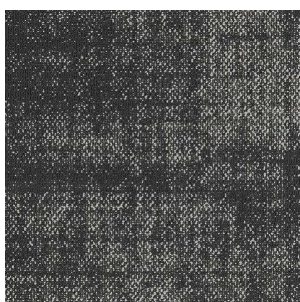
SPHERE 004



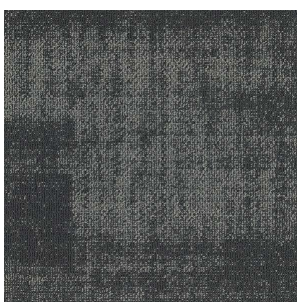
MUNDANE 005



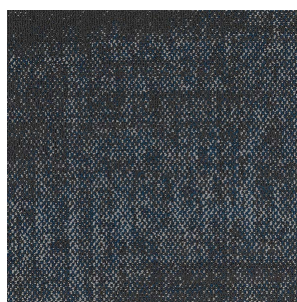
BRUSHLINE 006



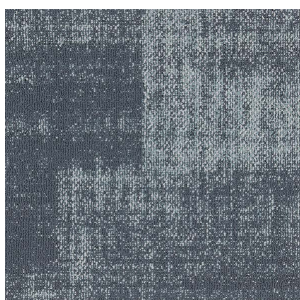
NATURALISTIC 007



SCROLLS 008



ISLE 009

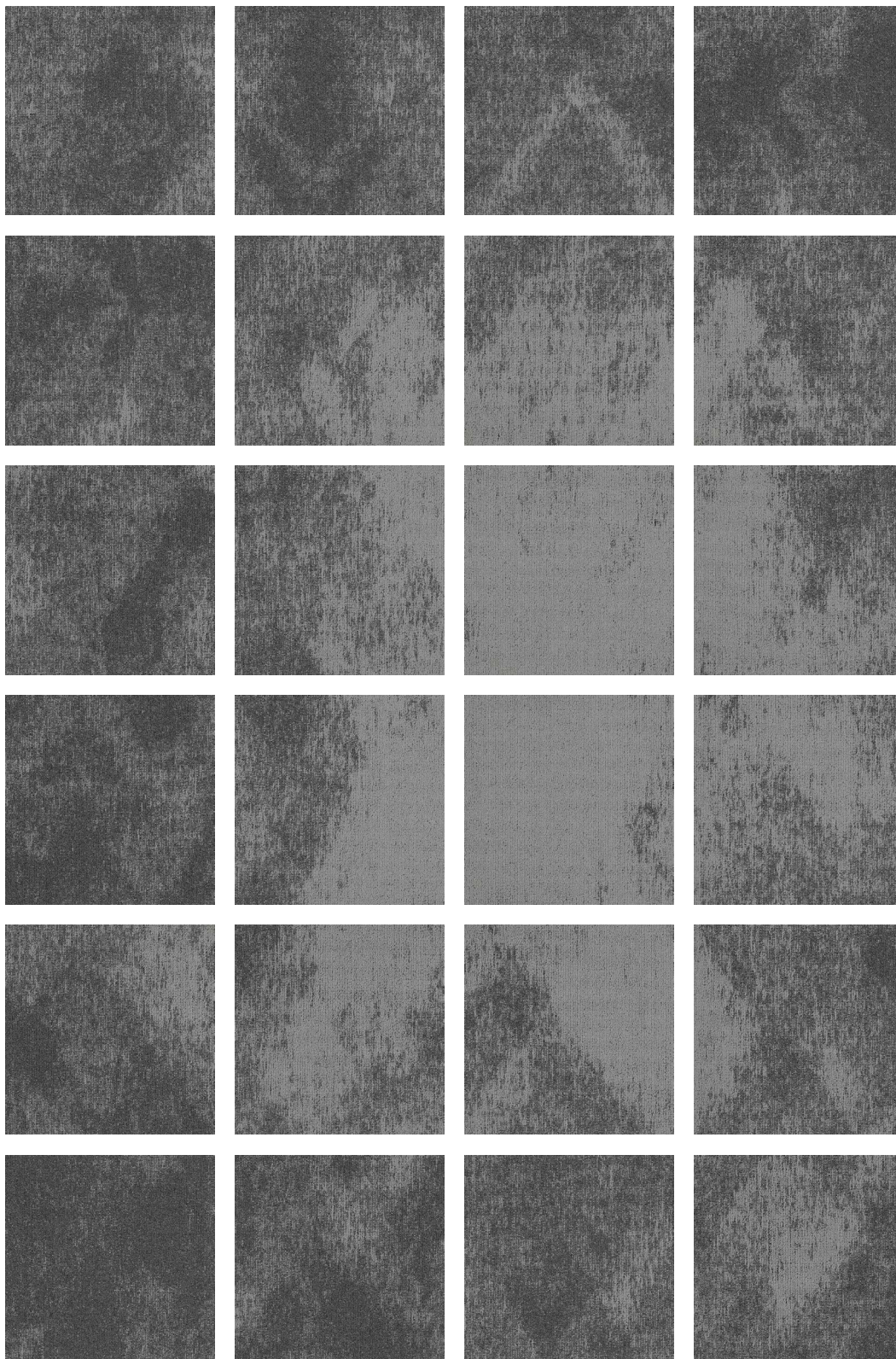


TWILIGHT 010



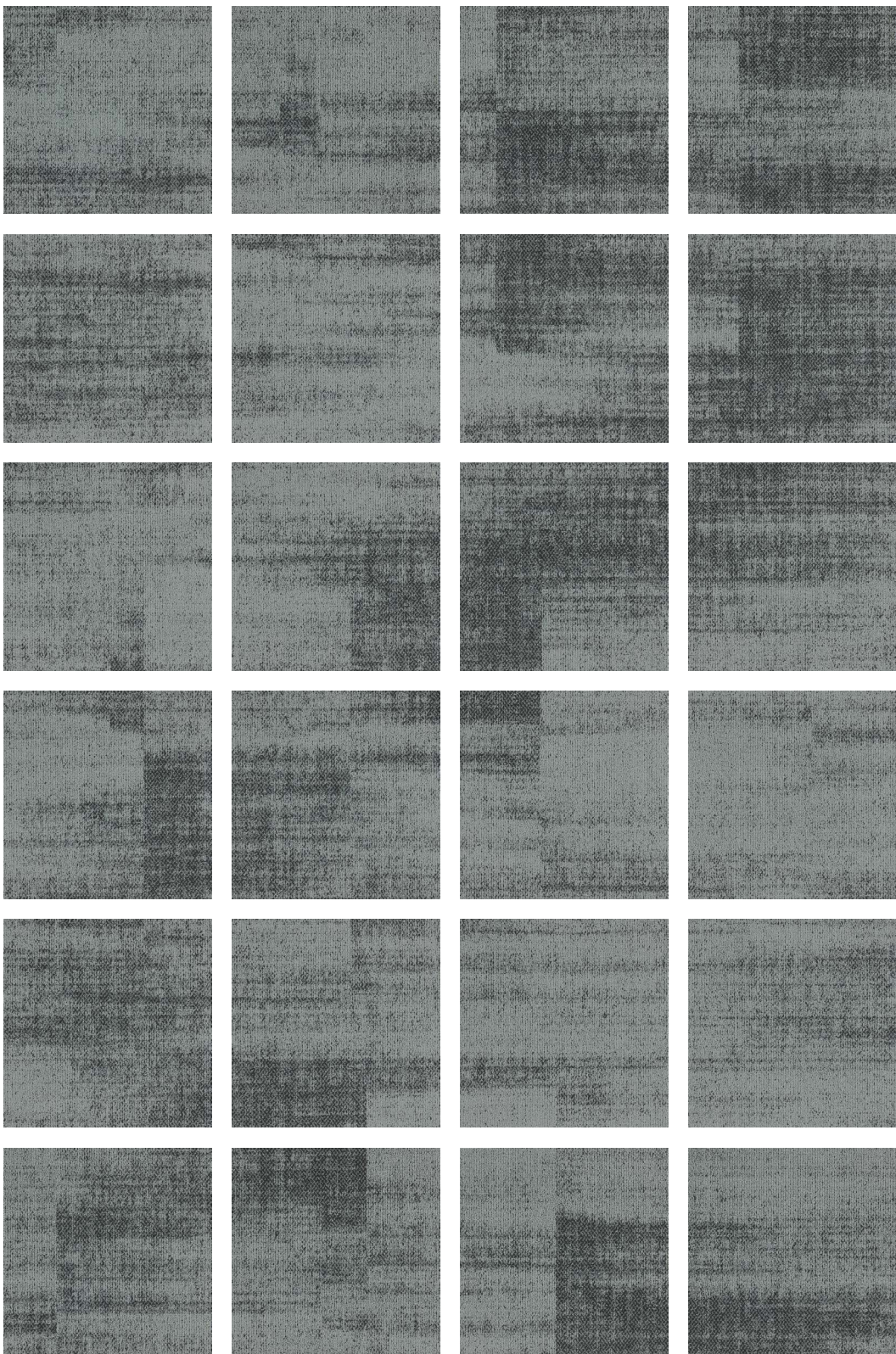
# Inception ESSENCE

Inception and Intrinsic have a large scale pattern repeat which represents at least 24 tiles (50cm).



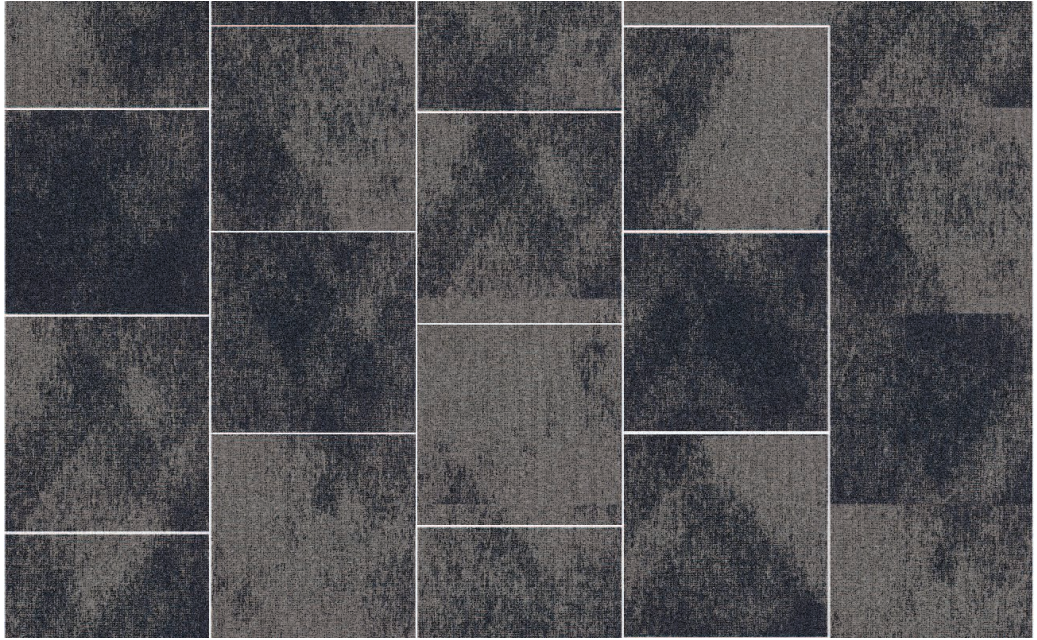


# Intrinsic ESSENCE





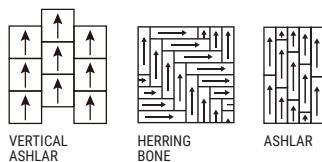
# Installation



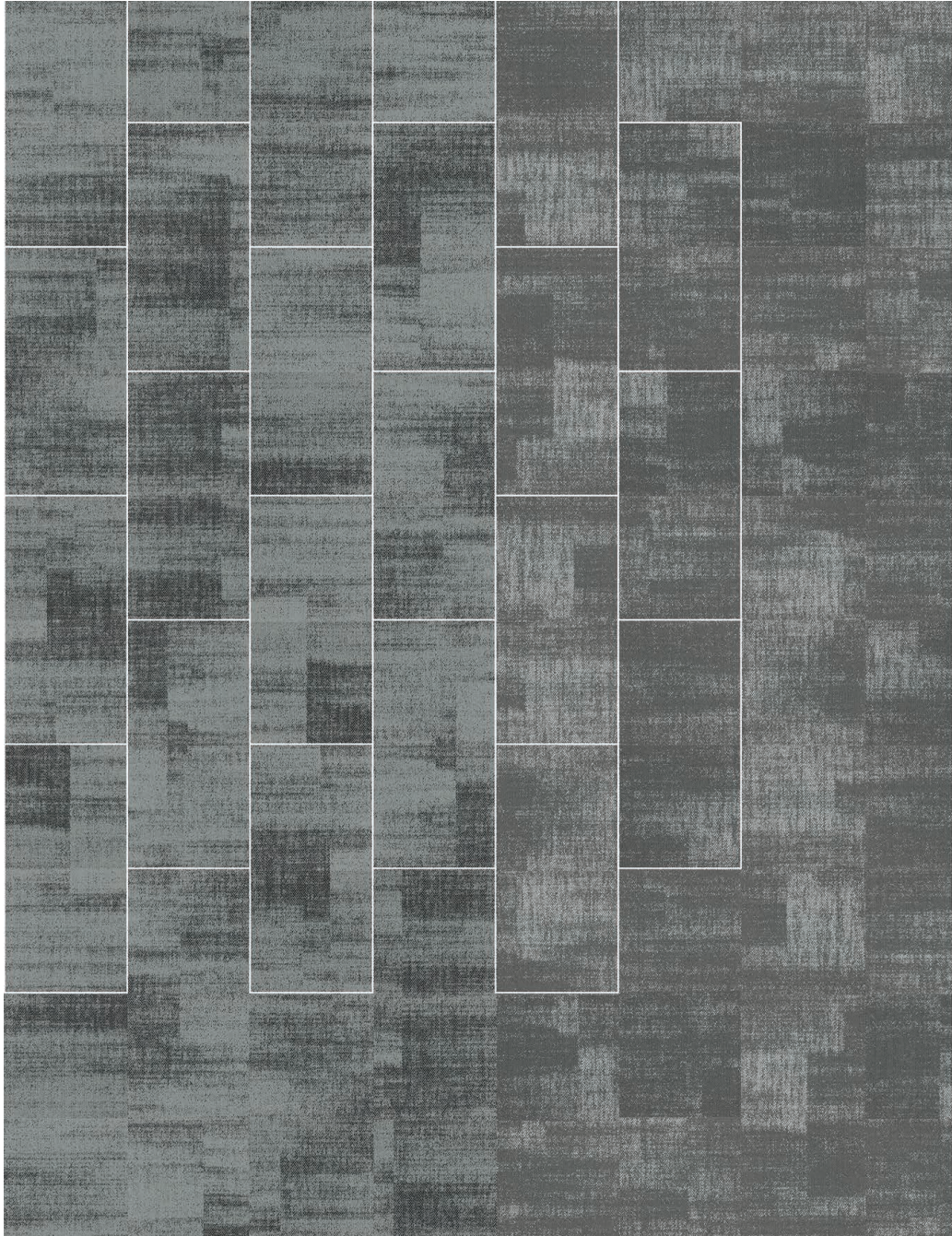
Inception SPHERE 631094004 Tile 50 x 50 cm Vertical Ashlar Installation



Inception SKYLIGHTS 631094003 / Intrinsic ESSENCE 631100002 Tile 50 x 50 cm Vertical Ashlar Installation



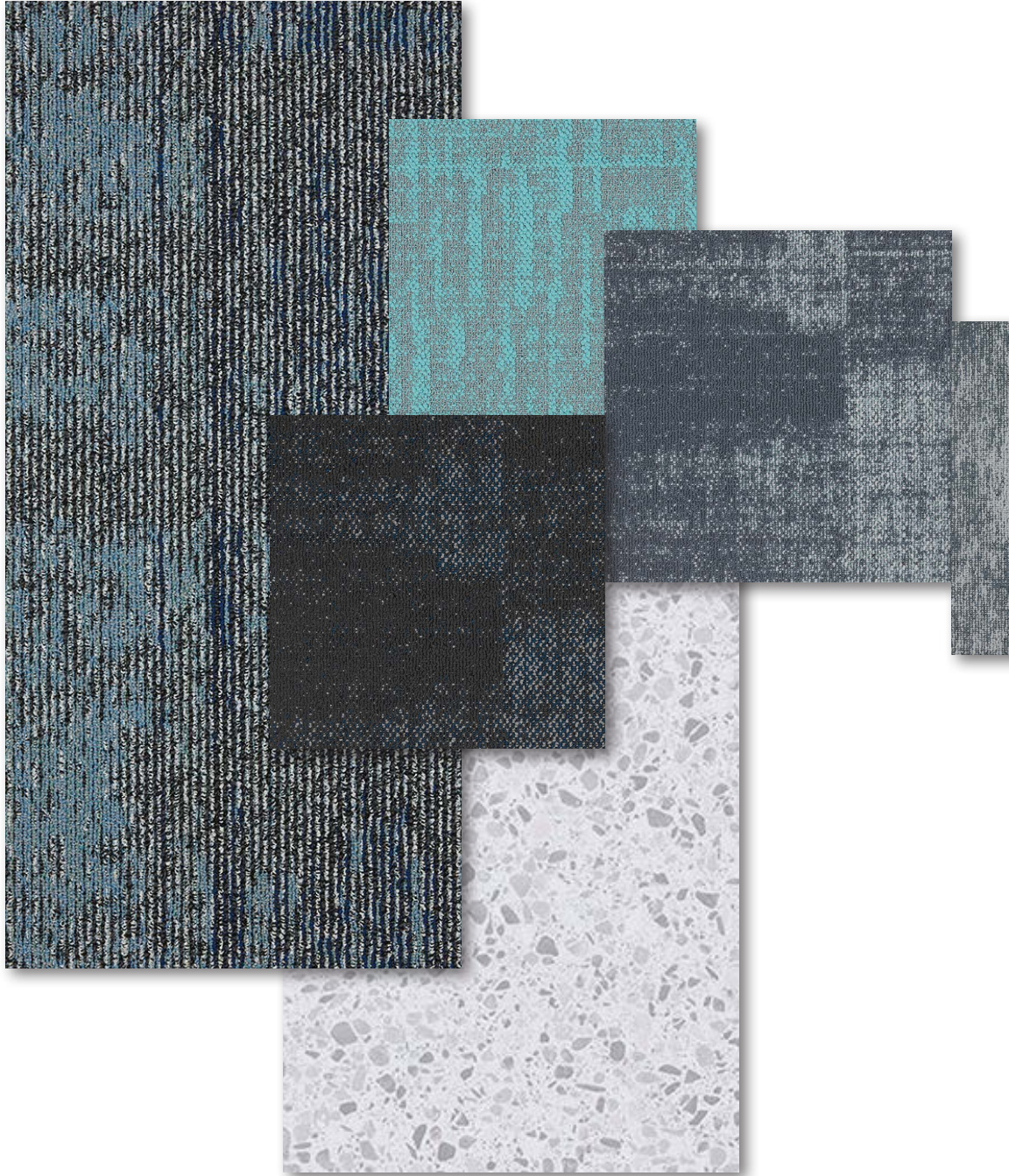




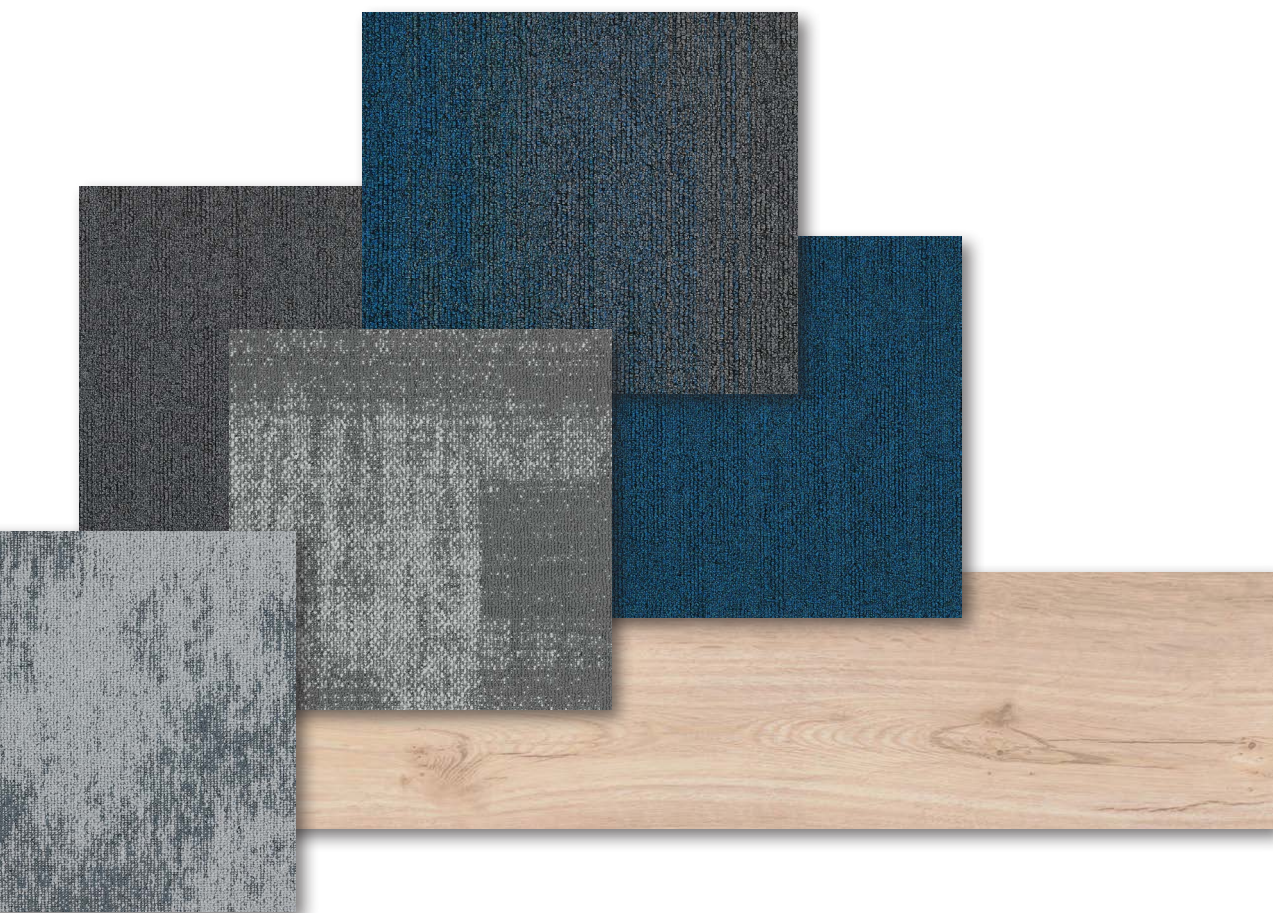
Intrinsic ESSENCE 631102002 / Intrinsic SKYLIGHTS 63102003 Plank 50 x 100 cm Vertical Ashlar Installation



No one covers you better.







Inception SKYLIGHTS 003 / Intrinsic SKYLIGHTS 003 / Intrinsic TWILIGHT 010 /  
Intrinsic ISLE 009 / Degrees Transition MOUSE/CAPRI 012 / Grid CYAN 022 /  
Crochet IBIZA 007 / iD Elegance 55 256030030 / iD Pro Generation 55 256044006



# Committed to quality

## **VOCs and Air Quality**

We share your responsibility to protect air quality in new office environments: all our Tanus modular carpets have the Green Label Plus certification which result from our exhaustive efforts to eliminate harmful VOCs in our product design and manufacturing process. Our Tandus modular carpet with PVC backing is also 100% phthalate-free.

## **Antimicrobials**

Tandus modular carpet is designed to deliver maximum protection against mold and mildew without the use of hazardous antimicrobial pesticides, which can be inhaled and create adverse health effects. Using antimicrobial treatment on the carpet will only be temporary and will favor the bacteria resistance in the middle and long term, which is a major public health threat. We guarantee a 15-year warranty product without relying on unnecessary chemicals.

## **Stain Resistance**

Our carpet benefits from Eco-Ensure technology: a fluorine-free and PFAS – free soil protection to avoid any stains on the carpet. In addition, we recommend to follow the maintenance instructions of our carpet tiles and to clean as soon as possible any stains..

## **Fire Safety**

All Tandus modular carpet are tested in independent and certified laboratory to meet Class 1 rating on flammability.



## Recycled Content

We have partnered with third party company to recycle empty wine bottles into our Ecobond Backing. Up to 60% of the Ecobond secondary backing is made of recycled materials.

In some Tandus collections, we use the ECONYL® yarn which is made from 100% regenerated nylon including discarded fishing nets. Tarkett supports the Healthy Seas initiative that aims to remove waste from the sea, in particular fishing nets and recycling them into regenerated yarn.

## LEED and WELL

As part of a sustainable, people-friendly solution, our Tandus modular carpet can contribute to both promoting workplace productivity and satisfaction, and achieving sustainable building standards including LEED and WELL:

- Green Label Plus certificate & low TVOC reports for Good Indoor Air quality
- Acoustic report to show how it can contribute to noise reduction
- 100% recyclable carpet tiles
- Recycled Content of Ecobond backing in the framework of our circular economy model
- Tarkett engagement on U.N. Global Compact
- Made in Asia products to limit impact on the environment
- Use of ECONYL® Yarn for some collections, a yarn made from 100% regenerated nylon including discarded fishing nets.



Please find more information on our sustainable initiatives on:  
[https://www.tarkett-asia.com/en\\_RA/sustainability](https://www.tarkett-asia.com/en_RA/sustainability)



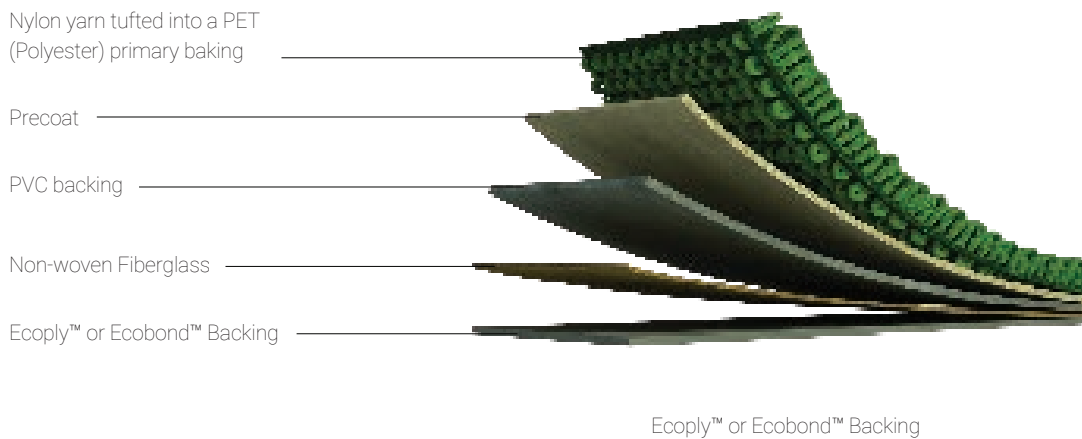
# Backings

## Tandus ECOPLY™ PVC Backing (Standard)

Standard backing for all Tandus Asia product designs, 100% recyclable.

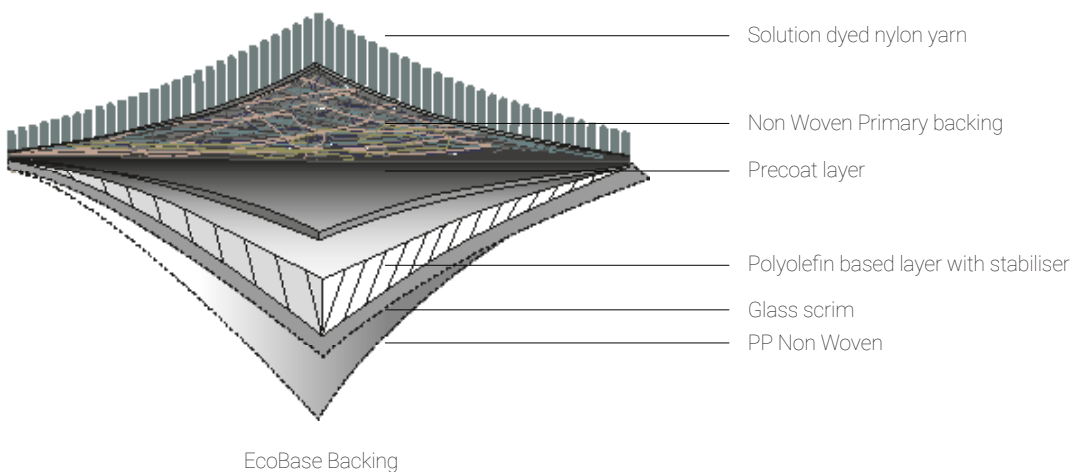
## Tandus ECOBOND™ PVC Backing

Backing option for all Tandus Tandus Asia product designs.  
It contains a minimum of 35% overall recycled content, 100% recyclable.



## EcoBase Backing (non-PVC)

EcoBase is a polyolefin-based backing, PVC free, 100% recyclable, and CRI Green Label Plus certified. Inspired by nature's perpetual cycles of development, EcoBase has been specifically designed with disassembly and recycling in mind. Due to its innovative composition, the polyolefin based layer is fully recyclable.





# TarkettTAPE™

TarkettTAPE™ to be used with Tandus carpet. TarkettTAPE changes the standard in carpet tile installation by offering maximum flexibility and adhesive qualities without using any glue on the subfloor.

## Maximum flexibility

Tandus carpet tiles installed with TarkettTAPE can easily be removed. Because the tape sticks to the tile, and not to the floor, you can change your carpet tiles when needed or return them to us for recycling at the end of use. TarkettTAPE leaves no traces on the subfloor, the tiles all stick solidly, creating a 'floating' floor that stays in place as long as needed. TarkettTAPE sticks straight from the roll, whereby installers find it quick, clean and easy to use. It has very low VOC-emissions, no odour, and no drying time. With these specification, TarkettTAPE contributes perfectly to your sustainability goals.

## Fast and Easy Installation

Each tape unit measures ca. 8 x 10 cm with notched perforations between each unit.

There are 324 units per roll with a coverage area of ca. 80 m<sup>2</sup>/roll installed with 50 x 50 cm tiles. Packaged from 1 to 16 rolls per box with a minimum order quantity of one roll. The tape unit is centered at the corner of the tile as to engage the inner section of the two adjacent and one opposing tile corners.

TarkettTAPE works perfectly with all our Tandus backings.







Inception BLOCK 631094001 Tile 50 x 50 cm Vertical Ashlar Installation



# Identity: Inception & Intrinsic

## PRODUCT SPECIFICATION SHEET

Face Construction	Metric	Imperial	Procedure
Construction	Patterned Loop		
Fiber System	100% Nylon		
Dye Method	Solution Dyed		
Gauge	50.4 rows/10cm	1/13	
Stitches per inch	37.5 stitches/10cm (Inception)	9.5 stitches/inch (Inception)	ASTM D-418
	36.0 stitches/10cm (Intrinsic)	9.1 stitches/inch (Intrinsic)	ASTM D-418
Pile Height Average	4.0 mm	0.157 inch	ASTM D-418
Density Factor	233.3 kg/m <sup>3</sup> (Inception)	6,306 oz/yd <sup>3</sup> (Inception)	UM44D
	268.7 kg/m <sup>3</sup> (Intrinsic)	7,261 oz/yd <sup>3</sup> (Intrinsic)	UM44D
Total Product Weight	3,691 g/m <sup>2</sup> ± 5% (Inception)	108.9 oz/yd <sup>2</sup> ± 5% (Inception)	
	3,876 g/m <sup>2</sup> ± 5% (Intrinsic)	114.3 oz/yd <sup>2</sup> ± 5% (Intrinsic)	
Product Testing Information			
Indoor Air Quality	All Tandus Flooring products comply with CRI Green Label Plus Standards ID: #GLP5288. Passes GB 18587-2001		
Surface Flammability	Passes CPSC FF 1-70		ASTM D-2859
Flooring Radiant Panel	Class I (Mean average CRF: 0.45 watts/cm <sup>2</sup> or higher)		ASTM E-648
Electrostatic Propensity	3.0 kV or lower	Permanent Conductive Fiber	AATCC 134
Colourfastness to Light	≥ 4 after 100 hours		AATCC 16E
Backing System			
Standard Backing	Tandus ECOPLY™ PVC Backing		
Backing Customization Option	Tandus ECOBOND™ PVC Backing		
Recycled Content	Tandus ECOBOND™ contains a minimum of 35% overall recycled content		
Recycling	100% recyclable when recovered		
Standard Product Size	500mm x 500mm; 500mm x 1000mm		

### Product Notes

1. Product specifications are derived from averages resulting from normal manufacturing tolerances in yarn, fiber, temperature, humidity and colour. Product specifications may vary within normal industry and standardised testing tolerances.
2. These specifications reflect mean averages based upon tests of production runs of this carpet style by independent laboratories. A range of variances is implicit in the testing process. Furthermore, the standard test methods established to derive the specifications lack a degree of precision and repeatability; therefore, individual test results on the actual carpet purchased may differ from the specifications above.
3. Colours may vary slightly from dye lot to dye lot.
4. Backing or other materials may be changed without prior notice when shortages occur or when technological advancements become available which provide for improvement of the product's performance.
5. All Tandus Flooring products are 100% recyclable.

